



ESTeem

SECURE WIRELESS NETWORKING



Horizon 2.4-MIMO

Key Features

License-Free 2.4GHz frequency



Reliable Dynamic *IndustrialMESH* Networking

High-speed connectivity (up to 300 Mbps) to provide bandwidth for today and tomorrow's networking demands

Edge-to-Edge AES-256 Cybersecurity

Scalable, Cost Effective, and Future Proof

Simple configuration - Build and manage secure OT infrastructure in minutes

Layer 2 *AND* Layer 3 network support

Fixed location & Mobile modes of operation

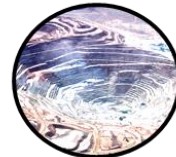
[ESTeem 195Eg Series compatible]



Water/Wastewater



Oil & Gas



Mining



Power & Energy



Material Handling



Factory Floor



Agriculture

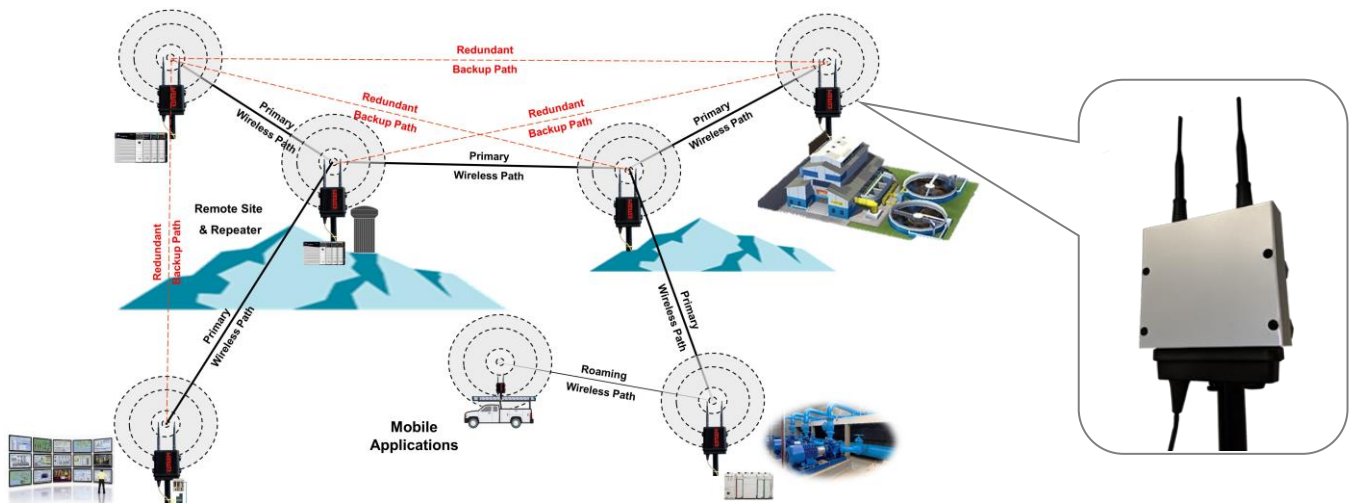


Infrastructure


The **ESTeem Horizon 2.4-MIMO** is a ruggedized, industrial wireless device built to be an essential component of the demanding industrial communications infrastructure.

The **ESTeem Horizon 2.4-MIMO** provides unsurpassed speed and range to deliver the reliable, isolated and secure wireless networks required today to provide complete connectivity to critical IT, operations, control systems, and remote asset data.

Horizon 2.4-MIMO



ESTeem Horizon 2.4-MIMO Specifications

Transmitter/Receiver	
Frequency of Operation (Software Selectable)	2.412 to 2.462 GHz (11-channels)
RF Data Rate	1 to 300 Mbps
Tx Output Power (Software Selectable)	500 mW (27 dBm)
Channel Bandwidth	5 MHz, 10 MHz, 20 MHz or 40 MHz
Tx Output Impedance	50 ohms
Rx Sensitivity	-93 dBm
FCC Type Acceptance	TV7R11E2HPND
Industry Canada Type Acceptance	7442A-R11E2HPND
LED Indicators	Power (On/Off) - Status (On/Off) - Transmitter (On/Off) - Receiver (On/Off)
Power Requirements	
Receive	250 ma @ 12 VDC
Transmit	1.25 A @ 12 VDC
PoE Power Supply	(IEEE 802.3at,30 watts) (opt)
External Power Input	10 to 16 VDC @ 1.5 A
Input/Output Connectors	
Ethernet Port 1 (10/100/1000)	RJ-45 Female
Ethernet Port 2 (10/100/1000)	
802.11 Compatibility	802.11n/g/b 
RS-232C Data Port (2,400 to 115.2 K baud)	RJ-45 Female
RS-232C Programming Port (115,200,N,8,1)	
Antenna Input/Outputs	TNC Reverse Female
External DC Input Power	Mini-Combicon, 3-pin Female
Case	
Temperature Range	-30° to +60° C
Humidity	95% Non-condensing
Dimensions	1.9 in. H x 6.7 in. W x 6.2 in. L
Weight	1.25 lbs.
Product Warranty	1 Year
Other	
Outdoor Pole Mt. Kit	AA195PM (NEMA4 Rating When Used)
PoE Power Supply	AA175.5 (opt)
GPS Location	Optional (Factory Installed)
Security	
	WPA2, WPA, AES-128/256, TKIP, WEP-64/128 MAC ID filter

ESTeem Secure Wireless Networking

www.esteem.com

Phone (509) 735-9092

Revised: 13 OCT 2022