

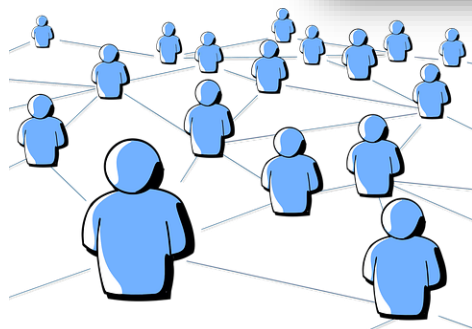
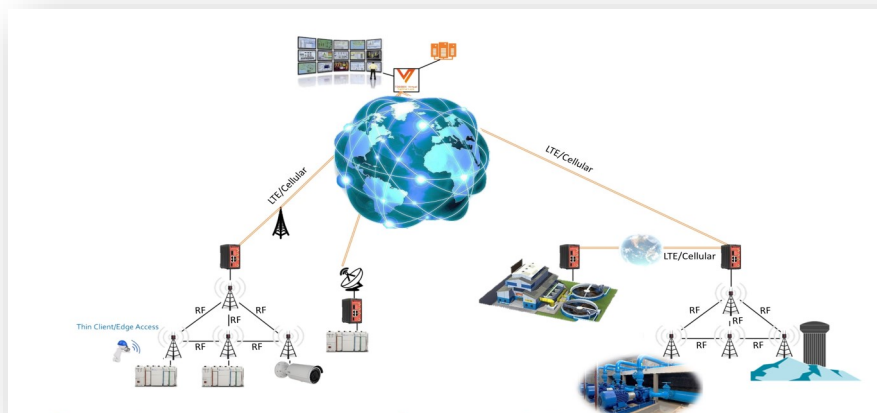


IIoT integration, Remote Access, Smart Manufacturing and the connected workforce are fundamentally transforming today's industrial automation networks. Improving productivity and efficiency depends on secure access to real time information. It's not just about overcoming connectivity obstacles....Reliable and secure Edge-to-Edge connectivity is the key to unlocking the power of a completely connected network.

ESTeem's Edge Access+ brings unprecedented possibilities for users to enhance network connectivity, manage their operations and to build new IIoT solutions. The **ESTeem Edge Access+** is an ideal solution for demanding industrial environments, creating encrypted VPN connections with integrated WiFi and built-in LTE to deliver reliable and secure Edge-to-Edge connectivity. Anywhere. Anytime.

OT NETWORKING

Connect operational devices and users for Industry 4.0 initiatives without recreating the existing business processes or IT systems. Match the cost, complexity and security profile for today's scale.



REMOTE ACCESS CONTROL

Manage and grant access rights to operational systems from a single view, effortlessly with no IT skills.

- **Simple, Automated VPN Connections with end-to-end encryption.** Connect to your remote assets or create an entire secure network in just minutes.
- **Integrated WiFi enables even greater connectivity.** No need for an additional AP.
- **Carrier neutral LTE modem with three modem variants covering the entire globe – use your preferred carrier**
- **Dual-SIM slots for operator redundancy allows for even more reliable connectivity**
- **Rugged design: robust and fan less enclosure, integrated DIN rail bracket and industrial screw-on DC power connector**

Ports

- 1 x USB 2.0, type A
- 1 x RJ-45 WAN connection, 10/100 Mb/s, auto-negotiation (MDI / MDI-X)
- 3 x RJ-45 LAN connection, 10/100 Mb/s, auto-negotiation (MDI / MDI-X)
- LAN3 can be assigned as Service connection, 10/100 Mb/s, auto-negotiation (MDI / MDI-X)
- Ethernet port isolation: 1500 Vrms 1 minute (when device frame connected to system ground potential)

Connections

- 12-48V DC (+/-20%), reverse polarity protected
- Device frame connector
- 2 x WiFi antenna connector, RP-SMA Female
- (TBL5i*) 2 x LTE antenna connectors, SMA Female
- 2 x Digital Input, 2 x Digital Output, 24V DC out
- DIN rail attachment (back)
- Maximum power consumption 10W

WAN connection features

- Independent of operating systems
- Works in all Internet connections (operator independent)
- Supports HTTP proxy servers with and without authentication
- Firewall friendly
- Works with dynamic, static and private IP addresses
- Built-in firewall, NAT
- Up to 50 concurrent VPN connections
- VPN throughput up to 70 Mbit/s

Mobile connection features

- TosiOnline™ Automatic network recovery that recovers from most mobile operator and modem problems
 - Dual SIM
- TBL5iC*
- Region: US/CAN
 - LTE Cat-6
 - Up to 300 Mbps DL, 50 Mbps UL
 - Frequency Bands (4G LTE): B1, B2, B3, B4, B5, B7, B12, B13, B20, B25, B26, B29, B41
 - Dual SIM

WLAN

- IEEE 802.11 b/g/n, max. 150 Mbps

- WEP, WPA-PSK, WPA2-PSK, WPA-PSK/WPA2-PSK Mixed, WPA-EAP, WPA2-EAP TKIP/AES encryption
- Frequency 2.412 – 2.462 GHz, 11 channels
- Output power 20 dBm max

Included accessories

- RJ-45 Cat5e Ethernet cable
- 2 x WiFi antennas, 2 dBi
- I/O connector plug
- Power connector plug
- TBL5*PS: AC adapter - Input 100 – 240 V AC, frequency 47 – 63 Hz, Output 12.0 V, 1.6 A, max 19.2 W. EU, UK, AU and US power socket
- TBL5*PS: DC feed cable
- TBL5iC*: US/CAN modem
- TBL5i*: 2 x LTE antennas

I/O specifications

- 2 x digital inputs, galvanic isolation, current limited to <5mA, Voltage 0 - 32V nom. >12V is interpreted as '1', 0-5V is '0'
- 2 x digital outputs, 24V DC, 50 mA current shared by the outputs and 24V DC out
- 1 x 24V DC out, 50 mA current shared by 24V DC out, output 1 and output 2
- Software Configurable I/O state

Physical properties

- 110 mm x 58 mm x 127 mm / 4.33" x 2.28" x 5.0" (L x W x H)
 - Storage temperature -40 °C ... +70 °C / -40 °F ... +158 °F
 - Protection class IP20
- TBL5*
- Weight 495 g / 1.09 lbs (net weight article)
 - Operating temperature -20 °C ... +60 °C / -4 °F ... +140 °F
- TBL5i*
- Weight 505 g / 1.11 lbs (net weight article)
 - Operating temperature -20 °C ... +60 °C / -4 °F ... +140 °F