

ESTeem Discovery Utility

The ESTeem Discovery Utility will allow you to configure the IP address on the Horizon radio to match your network regardless of its current IP subnet. This utility will also allow you to update the software in the Horizon and open the web configuration for that wireless modem.

Installation

The Discovery Utility can be downloaded from the ESTeem web site (<http://www.esteem.com>) or is available on the Software Resource media that was shipped with the Horizon radios.

1. The Discovery Utility is a Java™ based application compatible with any computer operating system (Window, Linux, etc). The application requires two (2) additional support files to operate:

Java – Downloadable from <http://www.java.com>. The version required will be based upon your operating system.

Note: The installation and updates from Java may try and install additional web browser toolbars. Uncheck the optional installation if they are not desired.

WinPcap – Downloadable from <http://www.winpcap.org/>. The version required will be based upon your operating system.

2. Once both the above programs have been installed, save the ESTeem.exe file to any location on your computer such as the Desktop. Double click the ESTeem.exe to launch the program. (Figure 1 will be displayed.)
3. Connect the Horizon modem to your computer either directly to the Ethernet card or through a Switch using a CAT-5e Ethernet cable. The Ethernet port supports Auto-Negotiation, so either a patch cable or crossover cable will work. Press the *Discover EST Modems* button.

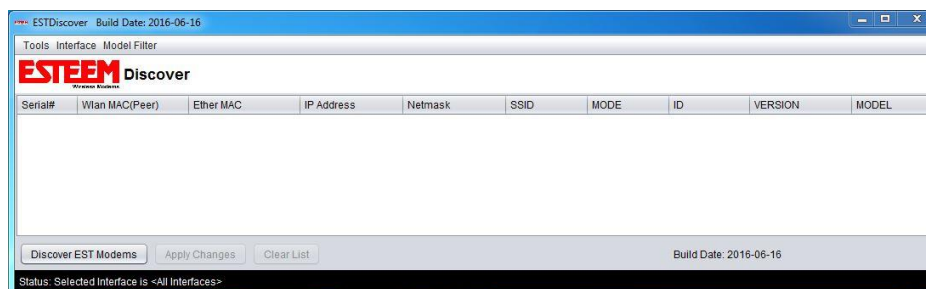


Figure 1: ESTeem Discovery Utility

4. The ESTeem Horizon will be displayed (Figure 2). If the ESTeem Horizon is not on the same IP subnet as the computer, double click on a specific IP, Netmask or Gateway and make any necessary changes. Press the *Apply Changes* button when complete.

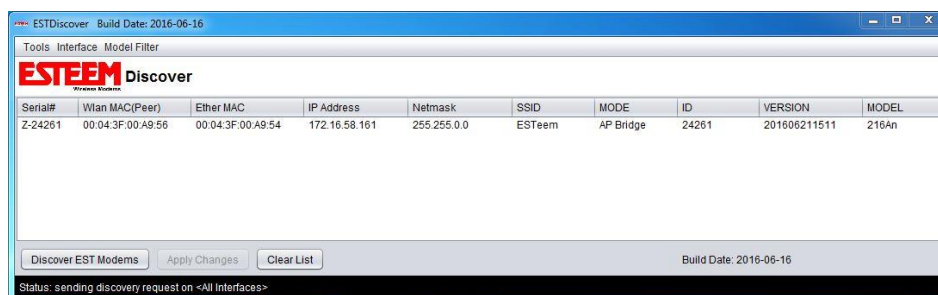


Figure 2: ESTeem Discovery Utility

- If changes were made to the IP address, press the *Discover EST Modems* button again to display the current configuration. Next, right-mouse click on the Horizon you wish to configure and select *Configure Radio* button to open the IP address in the default web browser to begin programming.

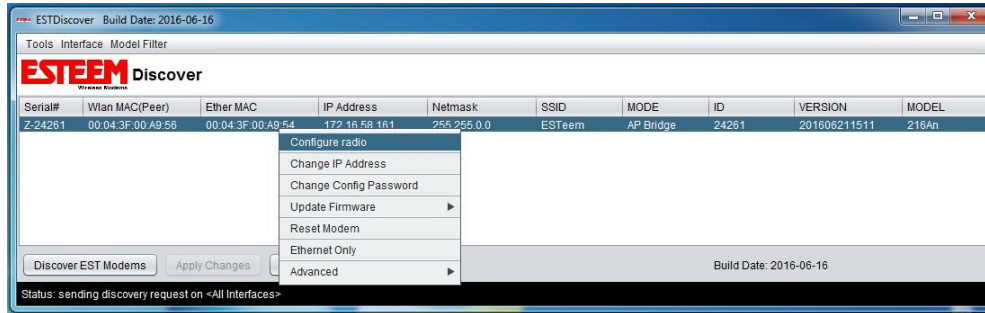


Figure 3: Opening Radio Configuration Software

- If your computer is configured for the same IP subnet as the ESTeem Horizon wireless modem, you will be asked to sign in with the Username and Password (Figure 4). You can now begin programming the Horizon for your application.

Technical Tip: The default Username and Password is "admin" (all lower case).

Example

Username: admin
Password: admin

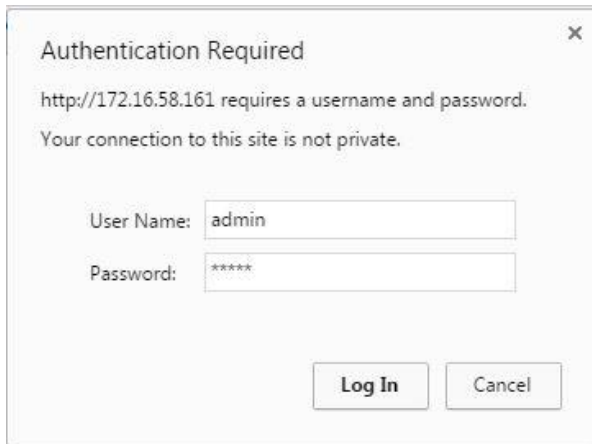


Figure 4: ESTeem Web Page Log-on Screen